



Touching the land.

The story of how
a maker's community
is making a **place** to
live and to work in
the Tillery grove.



Imagine Art
where every life is a work of art

We are an east Austin community of artists, whose lives and work is a catalyst for systems change and social justice.

Our mission is transformation.
Our motto is "Every Life is a Work of Art".

Artists with disabilities were absent from the arts and in 1996, Imagine Art was born in pursuit of a vision to make place for these artists to thrive and contribute.

We cherish our small beginnings, when 10 artists with disabilities entered the arts community with financial and personal support. Twenty-five years later, a diverse community of 150 artists is now recognized as leaders in creative placemaking.

Artists with disabilities are demonstrating the power of creative place. Imagine Art has re-positioned those who were the least likely to succeed. Today, they are artists, leaders, teachers, micro-business owners and placemakers.

Artists

Catalyst

Creatives

Teachers

Leaders

ADVOCATES

Placemakers

Photographers

Filmakers

Bookmakers

Painters

Illustrators

Ceramists,

Actors

Musicians

Performers

Writers

Dancers

Storytellers

GIVERS



This is
who we
are.

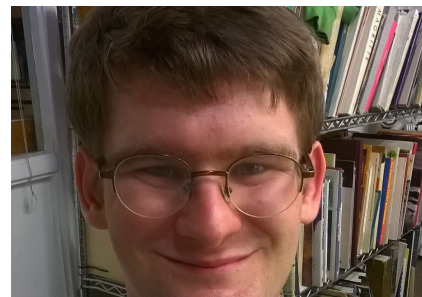
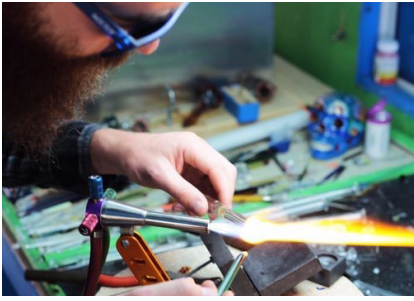


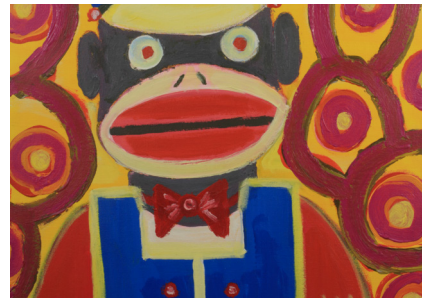


WE *are*
DIVERSE

*intellectual disability
Autism Blind
mental illness Deaf
and physical*

Some are self-taught, outsider artists. Others are educated teachers with Master Degrees. Many are micro-business owners, some are singers and songwriters, some poets, some actors and some are founders of non-profit ventures.





Creative Placemaking

The heartbeat is the studio.



Maker spaces reflect the artists: illustration, ceramics, painting, and mosaic, blown glass, textiles & mixed media.

This is
what
we do.

Imagine Art currently offers a free public studio with access to materials and services that support microbusinesses. An onsite gallery offers affordable rental for rehearsing, performing and teaching. Embedded in the art services are day habilitation services, job readiness and vocational training, providing critical services to ensure equity and accessibility. Two Artistic Directors oversee 17 AmeriCorps Members who serve as Artists in Residence to provide specialized interventions that build skills and knowledge. Opportunities include; college experience, exhibition, and a residency track, which deploys teams of artists with disabilities to deliver arts based services in the community through a service learning model.

Creative Place-making is defined as an evolving field of practice that intentionally leverages the **power** of the **arts, culture and creativity** to serve a community's interest while driving a broader agenda for **change, growth and transformation** in a way that also builds character and **quality of place.**



WRAP AROUND

Art Gallery

Classes & Workshops

Residency Teams

Sponsored Projects

JOB READINESS

Microbusiness

Supported Employment

Garden

Daily Meal

Peer Support

Transportation

Day Habilitation

Attendant Care

In Home Nursing

Host Foster Care Placement

Independent Living Homes

Social Work

Behavioral Support

Speciality Therapies

Adaptive Equip

Home Modifications



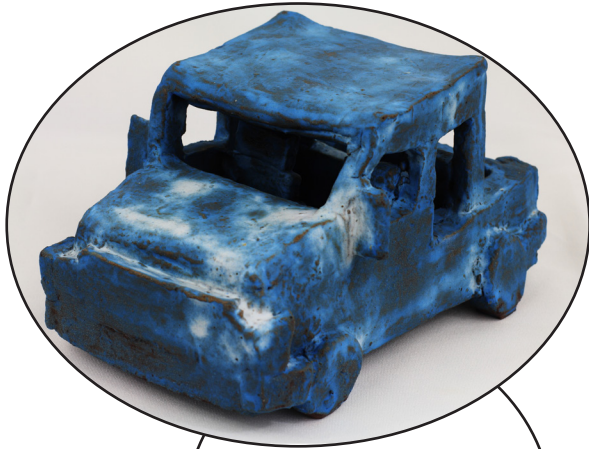
Imagine Art responds to the needs within its own community by designing comprehensive wrap around services built to empower people with disabilities for independent living. Services **beyond the arts** include: long-term care; peer support and food security. As a long-term care provider, Imagine Art offers residential services, attendant care, transportation, nursing, social work and specialty therapies that empower people with disabilities to opt out of institution care and live in the community with supports. Peer support is a program that establishes a statewide curriculum to train and certify people with intellectual developmental disabilities to provide peer support. Lastly, Imagine Art manages community gardens and serves a daily lunch that provides a hot, organic meal to the community.



Larin is a ceramic artist that contributes to **Live+Make**. As a maker, Larin inspires others in the studio, working 6 hours a day to produce his sculptured cars in clay.



This is
Larin.



SCULPTOR
Artist
Deaf
Blind
Autistic
Teacher
LEADER
Entrepreneur

Imagine Art expands to offer affordable housing because we are being displaced or at risk for displacement.

Some of our artists are already displaced. Their home is on the streets of Austin. Some are unable to sustain the cost of housing and they are episodically homeless and in boarding homes.

Many are living with aging parents, never having had opportunity to live independently. They too are at risk for displacement due to loss of caregiver.

Some live in their own apartment and face rising rents. and most struggle with the cost of living, food security and the cost of transportation.

Imagine Art designed Live+Make to meet the need for deep affordability and to decrease artist displacement.





Making Artists



Just picture it - its easy if you try...

If The Trees Could Talk is a creative installation designed for neighborhood engagement. An interactive arts installation informs physical and program design of the project - where story invite history and vision to be written, sung and danced in the grove.

Imagine Art is committed to establishing a community asset which attracts and engages the neighbors and we seek 78702 artists who desire to live and work alongside us in the grove.

We recognize a rich history and we are stepping into an existing neighborhood story.

As micro-business developers we seek those who will honor and value the work that we make.

As a job readiness program, we are making artists who are learning to be teachers. We offer opportunity to hold small community classes where the neighbors will engage.





Imagine Art's Live+Make partners public and private resources for a cross-collaboration that impacts housing, public health, arts & culture and economic development. **Live+Make** demonstrates a new way to deliver traditional services. Leveraging art and disability resources, the project establishes high caliber artistic service that attracts artists and which positions artists with disabilities as placemakers. Project partners include: the City of Austin Cultural Arts Division; ATCIC; HHSC; Texas Council for Developmental Disabilities; National Endowment for the Arts, ECHO *and with the acquisition of the Tillery pecan grove, we aim to welcome AFHC, NHCD and the Austin PARD.*

