

# A Rhapsody in Cerulean Blue

## The Seas and Skies of Kelly Reider

1 February - March 11, 2022

The various artists who created Spiderman, the Incredible Hulk, and the Fantastic Four inspired Kelly Reider to start his artistic journey at an early age. Kelly later developed a kinship with the many artists who painted dramatic nautical landscapes and brought to life the dynamics of Native American life in the 19th century.

The byproduct of that kinship are paintings assembled for this exhibition; the common denominator is Kelly Reider's use of blue--in the skies, rivers, oceans and lakes. His art takes on a rhapsodic feeling, in terms of the hard-edged action and gripping drama he depicts. The high seas and rugged Indian country provide the backdrops for Kelly's enthusiastic, all-encompassing paintings.

### Notable Artwork

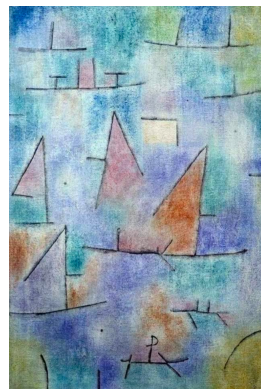
In his painting *Buffalo Hunt #2*, Kelly shows Comanches on Appaloosas hunting a herd of white horned bison as they stampede across the high plains. Kelly is highly skilled at portraying animals in action. The hunt takes place under hazy blue skies and a big yellow sun. Tree covered hills are in the background, and the colors are vibrant earth tones.



The dreamy *A Date at Sea* is reminiscent of Paul Klee, the Swiss abstract expressionist and Kelly's source of artistic inspiration. To find more of Klee's influence, compare Reider's *Regatta* to *Klee's Harbour and Sailboats*.



*Regatta* by Kelly Reider



*Harbour and Sailboats*  
by Paul Klee



Cultural Arts

CITY OF AUSTIN  
ECONOMIC  
DEVELOPMENT

This project is supported in part  
by the Cultural Arts Division  
of the City of Austin Economic  
Development Department.

Kelly Reider is an artist  
at Imagine Art, a local  
nonprofit arts organization



AmeriCorps

This Exhibition was curated & installed  
by AmeriCorps volunteers, Feb. 2022